

SSK 10 × 3 mm stroomrail

Cu-ETP, stroombelasting: 140 A.



RoHS
compliant

REACH
COMPLIANCE

Made in
Germany



WE
CONTROL
COMPONENTS

Bestel direct online @ CC Nederland »



Voor aanvragen uit België [klik hier](#) »

10 x 3 mm bus bar made of copper for collecting of cables and wires and earthing electromagnetic interferences. Suitable for several [EMC cable shield clamps](#).

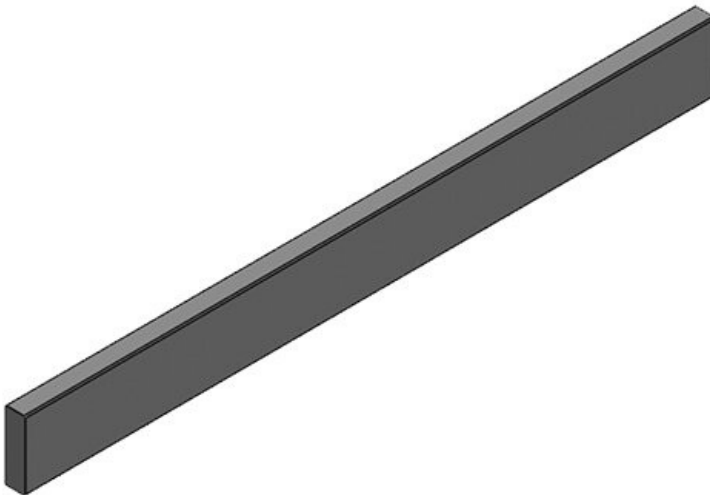
Specificaties

Materiaal Cu-ETP

Voordelen

Producttypes en maten

SSK



| | |
|---------|-------------------|
| Art.nr. | 36100 |
| EAN | 4251269302 |
| | 084 |
| Aantal | 1 |
| Lengte | 1.000 mm |
| Breedte | 10 mm |
| Hoogte | 3 mm |